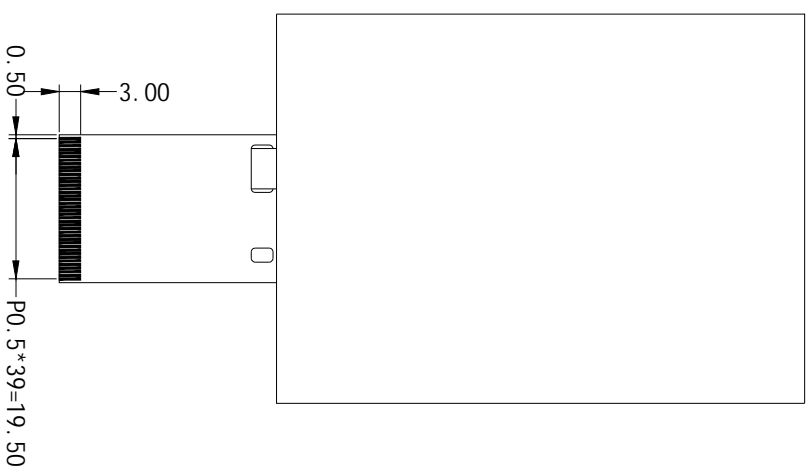
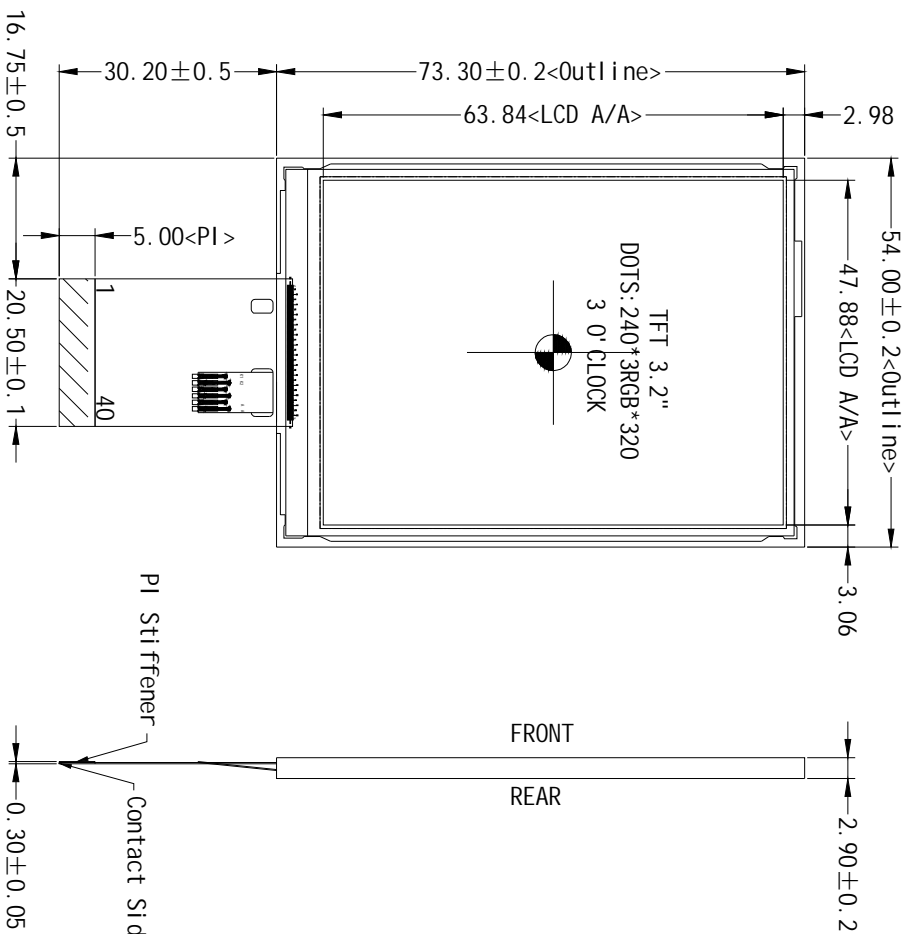


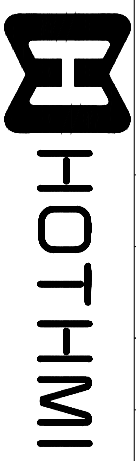
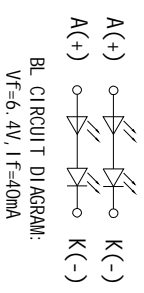
*** Do not display the fixed pattern for a long time when using a normally black panel, as it may cause image sticking due to the LCM structure. If the screen is displayed in fixed mode, use a screen saver. It is recommended to display the fixed mode in less than 2 minutes or less.



PIN NO.	SIGNAL	PIN NO.	SIGNAL
1	GND	21	DB7
2	NC	22	DB8
3	NC	23	DB9
4	NC	24	DB10
5	NC	25	DB11
6	SD0	26	DB12
7	VCI	27	DB13
8	LOWCC	28	DB14
9	SD1	29	DB15
10	CS	30	RESET
11	RS	31	IM0
12	WR	32	IM1
13	RD	33	GND
14	DB0	34	LED_K
15	DB1	35	LED_K
16	DB2	36	LED_K
17	DB3	37	LED_K
18	DB4	38	LED_A
19	DB5	39	GND
20	DB6	40	IM2

*Note: MCU interface mode selection by Pin IM2-IM0

Item	Parameter	Value
*1.	LCD Display Type	TFT, Transmissive, Normally White
*2.	Viewing Direction	3 O'CLOCK (U60/D60/L45/R60)
*3.	Interface	MCU 8/16 / SPI 3L/SPI_4L
*4.	Operating Voltage	VCI=2.8V, LOWCC=1.8V (Typ)
*5.	Operating Temp	-20° C~70° C
*6.	Storage Temp	-30° C~80° C
*7.	Driver IC	ST7789V
*8.	Backlight	WHITE VF=6.4V IF=40mA (Typ)
*9.	LCM Brightness	350 cd/m ² (Typ)



Part Number: TFF-H032A20V1ST3N40

Scale	1:1	Unit	mm	Tol.	±0.3
Ver.	A/0	Drawn	Liu	Date	2019-09-12